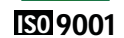
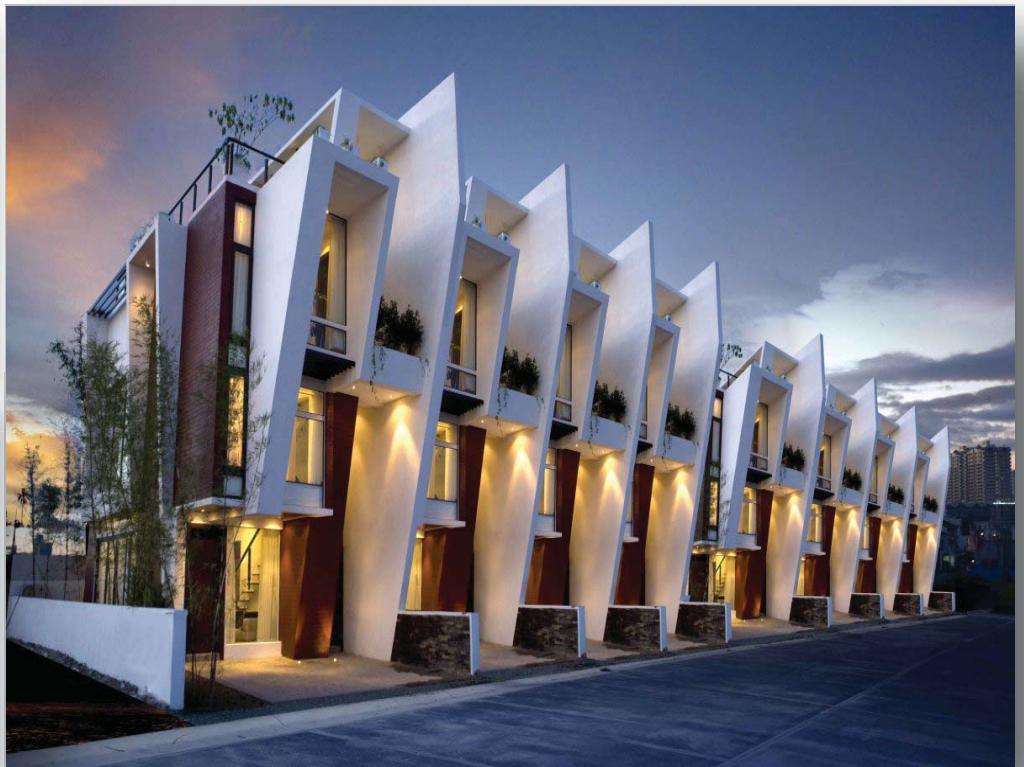




86HS Series
Inspire Ultra Inverter **SMV-16**
Single Pipe With Branch Module
R410A Heat Pump System



All Systems Include Electronic Expansion Valves

SPECIFICATIONS | 60Hz

86HS Series Inspire Ultra Inverter SMV16 Single Pipe With Branch Module VRF Condenser Unit R410A Heat Pump System
Cooling : 3,412-61,416 Btuh (1.0-18.0 kW)
Heating : 4,094-63,122 Btuh (14.6-17.6 kW)
ETL & AHRI

OUTDOOR UNIT FEATURES

- **INVERTER** Rotary Compressor
- **GROOVED** Copper Tubes - Hydrophilic Aluminum Fin
- **HIGH EFFICIENCY** Cooling
- **DURABLE CABINET** With Protective Coating
- **EASY** Connect Flare Connections
- **SUPER QUIET** Operations

Notes:

1. Nominal capacities are based on ARI standards 210 / 240 - 89, air entering the indoor coil for cooling at 80/67 ° F (27/19 ° C) , DB/WB indoor & 95 ° F (35 ° C) ambient temperature.operating at high fan speed for 220-240 volt, 50/60 Hz operation.
2. Ratings are based on indoor and outdoor units connected by 25 ft (7.6 m) of tubing.
3. Refrigerant metering device is installed in the indoor unit as standard.
4. Sweat service valves are provided for refrigerant pipe connection.
5. Insulation of suction line only is required.
6. Outdoor units are shipped with full operating charge.
7. For details of model number nomenclature, please refer to publication DCTNOM-50314

O U T D O O R	MODEL NO.	86HS	86HS050J 248-145DLGXZ	86HS060J 249-175DLGXZ	
	Cooling Capacity Min-Max	Btuh (kw)	3,412-54,592 (1.0-16.0)	3,412-61,416 (1.0-18.0)	
	Heating Capacity Min-Max	Btuh (kw)	4,094-58,004 (1.2-17.0)	4,094-63,122 (1.2-18.5)	
	Efficiency - SEER	Btuh/w (w/w)	16.0 (4.7)		
	Maximum No of Indoor Units		8	9	
	Compressor Type:		Inverter Rotary		
	Condenser Coil Type:		Grooved Copper Tubes - Hydrophilic Aluminum Fin		
	Fan	Type	Axial-Flow		
		Speed		3	3
		Air Flow	CFM (m³/h) Hi	3766 (6400)	4120 (7000)
Noise Level		(dBA) Hi	57	57	
Electrical	Motor	(Watts)	150	150	
	Voltage		208-230/1/60		
	Range (min-max)		min 177 - max 253		
	Fan Motor	FLA	0.68	0.68	
	Compressor	RLA	21	23	
	Cooling Power Input Nominal (W)		5000	5600	
	Minimum Circuit Amps (MCA)		27.0	30.0	
	Max. Fuse Amps (MFA-MOCP)		45	50	
Refrigerant Connections inches (mm)	Type		Flare		
	Liquid		3/8 (10)	3/8 (10)	
	Suction		3/4 (16)	3/4 (16)	
Refrigerant Control		Electronic Expansion Valve @ Distribution Box			
Refrigerant Charge	R410A	Oz. (Kgs)	174.6 (4.9)	174.6 (4.9)	
Body Dimensions inches (mm)	Height		53 1/7 (1350)	53 1/7 (1350)	
	Width		35 3/7 (900)	35 3/7 (900)	
	Depth		14 3/4 (375)	14 3/4 (375)	
Net Weight Lbs (Kgs)			255.8 (116)	255.8 (116)	

A C C E S S O R I E S	MODEL NO.	89FB	MJ202	MJ203	MJ205	
	Maximum No of Indoor Units		2	3	5	
	Electrical	Voltage	208-230/1/60			
		Range (min-max)	min 177 - max 253			
	Sound pressure level	(dBA) Hi	28	28	26	
	Refrigerant Connections to Outdoor units in(mm)	Type	Flare			
		Liquid	3/8 (10)	3/8 (10)	3/8 (10)	3/8 (10)
		Suction	3/4 (16)	3/4 (16)	3/4 (16)	3/4 (16)
	Drain Connections inches (mm)		1 1/4 (31)			
	Refrigerant Connections to Indoor units in(mm)	Type	Flare			
Liquid		1/4 (6)	1/4 (6)	1/4 (6)	1/4 (6)	
Suction		3/8 (10)	3/8 (10)	3/8 (10)	3/8 (10)	
Body Dimensions inches (mm)	Height	7 1/4 (182)	7 1/4 (182)	7 1/2 (193)		
	Width	17 1/4 (439)	17 1/4 (439)	18 1/4 (463)		
	Depth	12 1/3 (313)	12 1/3 (313)	13 1/3 (338)		
Net Weight Lbs (Kgs)		12.8 (5.8)	14.3 (6.5)	19.8 (9)		



DELTA Comfort Technologies LLC.
 3350 SW 148th Ave, Miramar, Florida.33027. USA
 Tel: 954 734 2708 Fax: 954 874 1699
www.deltacomforttechnologies.com
www.delta-dct.com

DCT Interamerica: Latin America-Mexico
info@dctinteramerica.com

DCT America: North America, Canada
info@dctamerica.com

DCT Europe: Europe, M.East, Africa
info@dcteu.com

DCT China: Asia, Pacific, Russia
info@dctchina.com