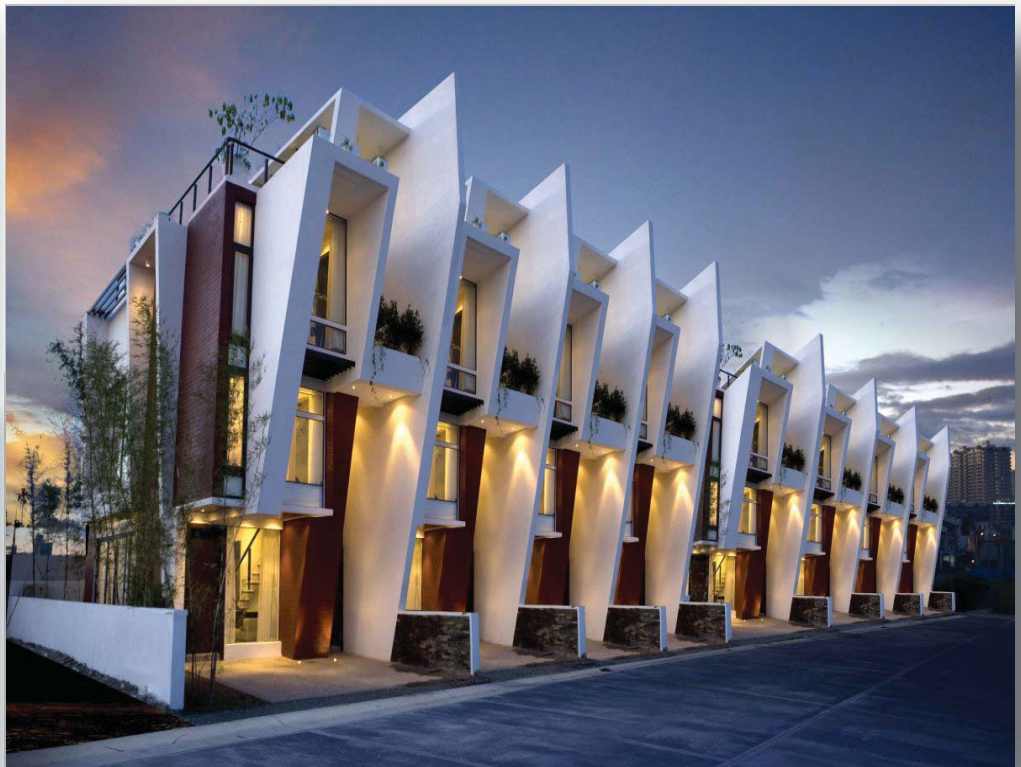




86HM Series
Inspire Ultra Inverter MMV16
R410A Heat Pump System
Multi Pipe



All Systems Include Electronic Expansion Valves

SPECIFICATIONS | 60Hz

86HM Series

Inspire Ultra Inverter MMV16

Multi Pipe VRF Condenser Unit

R410A Heat Pump System

Cooling : 7,000-46,430 Btuh (2.1-13.6 kW)

Heating : 8,530-47,768 Btuh (2.5-14.0 kW)

ETL & AHRI

OUTDOOR UNIT FEATURES

- INVERTER Rotary Compressor
- GROOVED Copper Tubes - Hydrophilic Aluminum Fin
- HIGH EFFICIENCY Cooling
- DURABLE CABINET With Protective Coating
- EASY Connect Flare Connections
- SUPER QUIET Operations

Notes:

1. Nominal capacities are based on ARI standards 210 / 240 - 89, air entering the indoor coil for cooling at 80/67 ° F (27/19 ° C) , DB/WB indoor & 95 ° F (35 ° C) ambient temperature.operating at high fan speed for 220-240 volt, 50/60 Hz operation.
2. Ratings are based on indoor and outdoor units connected by 25 ft (7.6 m) of tubing.
3. Refrigerant metering device is installed in the indoor unit as standard.
4. Sweat service valves are provided for refrigerant pipe connection.
5. Insulation of suction line only is required.
6. Outdoor units are shipped with full operating charge.
7. For details of model number nomenclature, please refer to publication DCTNOM-50314

		PHYSICAL DATA				
O U T D O O R U N I T	MODEL NO.	86HM	86HM021J 242-062DLGXZ	86HM030J 243-088DLGXZ	86HM040J 244-115DLGXZ	86HM050J 245-150DMGXZ
	Cooling Capacity Min-Max	Btuh (kw)	7,000-21,000 (2.1-6.2)	7,500-33,000 (2.2-9.8)	8,530-34,120 (2.5-10)	8,530-46,430 (2.5-13.6)
	Heating Capacity Min-Max	Btuh (kw)	8,530-22,600 (2.5-6.6)	7,500-35,000 (2.2-10.3)	10,663-40,944 (3.1-12.0)	10663-47768 (3.1-14.0)
	Efficiency - SEER	Btuh/w (w/w)	16.0 (4.7)			
	Maximum No of Indoor Units		2	3	4	5
	Compressor Type:		Inverter Rotary			
	Condenser Coil Type:		Grooved Copper Tubes - Hydrophilic Aluminum Fin			
	Fan	Type	Axial Flow			
		Speed	3	3	3	3
		Air Flow CFM (m³/h) Hi	1530 (2600)	1530 (2600)	2177 (3700)	3237 (5500)
Noise Level (dBA) Hi		59	60	63	63	
Motor (Watts)		114	120	150	220	
Electrical	Voltage	208-230/1/60				
	Range (min-max)	min 187 - max 253				
	Fan Motor FLA	0.54	0.59	0.68	1.0	
	Compressor RLA	9.6	14.7	21	21.5	
	Cooling Power Input Nominal (W)	1650	3050	4300	4400	
	Minimum Circuit Amps (MCA)	13.0	20.0	28.0	29.0	
	Max. Fuse Amps (MFA-MOCP)	20	30	45	50	
Refrigerant Connections inches (mm)	Type	Flare				
	Liquid - Suction 1	1/4 (6.35) - 3/8 (9.52)	1/4 (6.35) - 3/8 (9.52)	3/8 (9.52) - 5/8 (15.9)	3/8 (9.52) - 5/8 (15.9)	
	Liquid - Suction 2	1/4 (6.35) - 3/8 (9.52)	1/4 (6.35) - 3/8 (9.52)	1/4 (6.35) - 1/2 (12.7)	1/4 (6.35) - 1/2 (12.7)	
	Liquid - Suction 3		1/4 (6.35) - 3/8 (9.52)	1/4 (6.35) - 3/8 (9.52)	1/4 (6.35) - 1/2 (12.7)	
	Liquid - Suction 4			1/4 (6.35) - 3/8 (9.52)	1/4 (6.35) - 3/8 (9.52)	
	Liquid - Suction 5				1/4 (6.35) - 3/8 (9.52)	
Refrigerant Control		Electronic Expansion Valve @ Outdoor Unit				
Refrigerant Charge	R410A	Oz. (Kgs)	47.6 (1.4)	77.6 (2.2)	102.3 (2.9)	169.3 (4.8)
	Height		14 7/8 (378)	15 1/2 (396)	31 (789)	43 1/2 (1103)
Body Dimensions inches (mm)	Width		35 1/2 (899)	37 1/4 (946)	36 1/4 (920)	28 (1015)
	Depth		23 1/2 (596)	27 1/2 (700)	16 3/4 (427)	17 1/4 (440)
	Net Weight Lbs (Kgs)		94.6 (43)	134.2 (61)	152.5 (69)	225 (102)



ISO 14001

ISO 9001



DELTA Comfort Technologies LLC.
 3350 SW 148th Ave, Miramar, Florida 33027, USA
 Tel: 954 734 2708 Fax: 954 874 1699
www.deltacomforttechnologies.com
www.delta-dct.com

DCT Interamerica: Latin America-Mexico
info@dctinteramerica.com

DCT America: North America, Canada
info@dctamerica.com

DCT Europe: Europe, M.East, Africa
info@dcteu.com

DCT China: Asia, Pacific, Russia
info@dctchina.com