



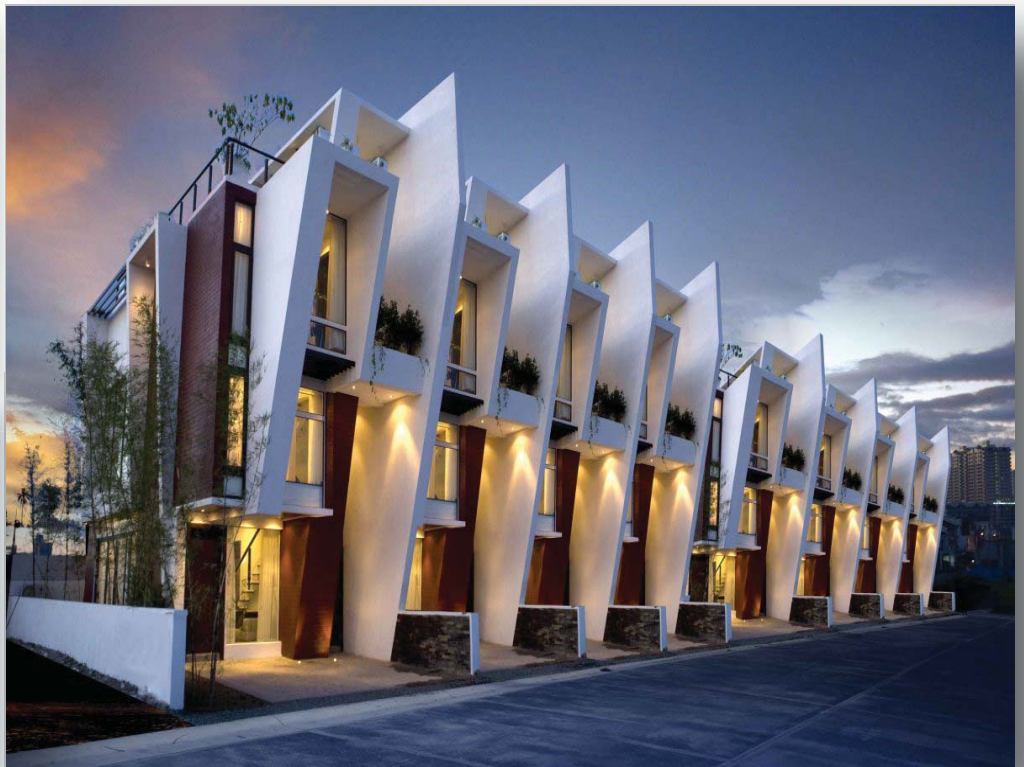
## 85WC Series

Inspire Ultra High Wall M16

## 85UT Series

Inspire Ultra Universal M16

Inverter Indoor Units



ISO 14001

ISO 9001

# SPECIFICATIONS | 60Hz

## 85WC Series

### Inspire Ultra High Wall M16 Inverter Indoor Unit

Cooling : 5,118-30,000 Btuh (1.5-8.8 kW)

Heating : 5,460-34,000 Btuh (1.6-9.9 kW)

ETL & AHRI

## INDOOR UNITS FEATURES

- WIRELESS LCD Remote Control
- Auto setting for Cooling, Dehumidifying, Fan
- Auto Restart
- Sleep Mode
- LED Display
- Easy Connect Flare Connections
- Cleanable Cartridge Filters

## 85UT Series

### Inspire Ultra Universal M16 Inverter Indoor Unit

Cooling : 5,118-30,000 Btuh (1.5-8.8 kW)

Heating : 5,460-34,000 Btuh (1.6-9.9 kW)

ETL & AHRI

#### Notes:

1. Nominal capacities are based on ARI standards 210 / 240 - 89, air entering the indoor coil for cooling at 80/67 ° F (27/19 ° C) , DB/WB indoor & 95 ° F (35 ° C) ambient temperature.operating at high fan speed for 220-240 volt, 50/60 Hz operation.
2. Ratings are based on indoor and outdoor units connected by 25 ft (7.6 m) of tubing.
3. Refrigerant metering device is installed in the indoor unit as standard.
4. Sweat service valves are provided for refrigerant pipe connection.
5. Insulation of suction line only is required.
6. Outdoor units are shipped with full operating charge.
7. For details of model number nomenclature, please refer to publication DCTNOM-50314

PHYSICAL DATA							
I N D O O R  U N I T	MODEL NO.	85WC	009 J 24-026DWGXZ	012 J 24-035DWGXZ	018 J 24-053DWGXZ	024 J 24-070DWGXZ	
	Cooling Capacity	Min - Btuh (kw)	5118 (1.5)	6824 (2.0)	7000 (2.1)	7200 (2.1)	7200 (2.1)
		Max - Btuh (kw)	11940 (3.5)	15000 (4.4)	21000 (6.2)	30000 (8.8)	30000 (8.8)
	Heating Capacity	Min - Btuh (kw)	5460 (1.6)	6150 (1.8)	7100 (2.1)	7200 (2.5)	7200 (2.5)
		Max - Btuh (kw)	15360 (5.5)	16400 (4.8)	33000 (9.7)	34000 (9.9)	34000 (9.9)
	Efficiency	SEER Btuh/w (w/w)	16 (4.7)				
	Refrigerant Control	Electronic Expansion Valve @ Outdoor Unit					
	Fan	Type	Cross Flow Fan				
		Speed	4	4	4	4	4
		Air Flow CFM (m³/hr) - Hi	330 (560)	341 (580)	500 (850)	588 (1000)	588 (1000)
Noise Level (dbA) Hi		47	48	54	55	55	
Motor (Watts)		44	44	55	53	53	
Coil Type:	Grooved Copper Tubes - Aluminum Hydrophilic Fin						
Electrical	Voltage	208-230/1/60					
	Range	min 187 - max 253					
	FLA	0.20	0.20	0.25	0.24	0.24	
Controls	LCD Wireless Remote Control						
Refrigerant Connections inches (mm)	Type	Flare					
	Liquid	1/4 (6.35)	1/4 (6.35)	1/4 (6.35)	1/4 (6.35)	1/4 (6.35)	
Suction	3/8 (9.52)	3/8 (9.52)	1/2 (12.7)	5/8 (15.9)	5/8 (15.9)		
Drain Connections inches (mm)	3/4 (17)						
Dimensions inches (mm)	Height	10 7/8 (275)	10 7/8 (275)	11 3/4 (298)	12 1/2 (315)	12 1/2 (315)	
	Width	33 3/8 (848)	33 3/8 (848)	37 (940)	39 3/5 (1007)	39 3/5 (1007)	
	Depth	7 (180)	7 (180)	7 7/8 (200)	8 5/8 (219)	8 5/8 (219)	
Net Weight lbs (kgs)	22.0 (10) 22.0 (10) 28.7 (13) 35.3 (16)						

PHYSICAL DATA							
I N D O O R  U N I T	MODEL NO.	85UT	009 J 24-026DWGXZ	012 J 24-035DWGXZ	018 J 24-053DWGXZ	024 J 24-070DWGXZ	
	Cooling Capacity	Min - Btuh (kw)	5118 (1.5)	6824 (2.0)	7000 (2.1)	7200 (2.1)	7200 (2.1)
		Max - Btuh (kw)	11940 (3.5)	15000 (4.4)	21000 (6.2)	30000 (8.8)	30000 (8.8)
	Heating Capacity	Min - Btuh (kw)	5460 (1.6)	6150 (1.8)	7100 (2.1)	7200 (2.5)	7200 (2.5)
		Max - Btuh (kw)	15360 (5.5)	16400 (4.8)	33000 (9.7)	34000 (9.9)	34000 (9.9)
	Efficiency	SEER Btuh/w (w/w)	16 (4.7)				
	Refrigerant Control	Electronic Expansion Valve @ Outdoor Unit					
	Fan	Type	Centrifugal				
		Speed	4	4	4	4	4
		Air Flow CFM (m³/hr) - Hi	383 (645)	383 (645)	559 (950)	736 (1250)	736 (1250)
Noise Level (dbA) Hi		46	46	50	54	54	
Motor (Watts)		55	55	110	145	145	
Coil Type:	Grooved Copper Tubes - Aluminum Hydrophilic Fin						
Electrical	Voltage	208-230/1/60					
	Range	min 187 - max 253					
	FLA	0.25	0.25	0.50	0.66	0.66	
Controls	LCD Wireless Remote Control						
Refrigerant Connections inches (mm)	Type	Flare					
	Liquid	1/4 (6.35)	1/4 (6.35)	1/4 (6.35)	3/8 (9.52)	3/8 (9.52)	
Suction	3/8 (9.52)	3/8 (9.52)	1/2 (12.7)	3/4 (17)	3/4 (17)		
Drain Connections inches (mm)	3/4 (17)						
Dimensions inches (mm)	Height	8 7/8 ( 225 )	8 7/8 ( 225 )	8 7/8 ( 225 )	8 7/8 ( 225 )	8 7/8 ( 225 )	
	Width	48 (1220)	48 (1220)	48 (1220)	48 (1220)	48 (1220)	
	Depth	27 1/2 ( 700 )	27 1/2 ( 700 )	27 1/2 ( 700 )	27 1/2 ( 700 )	27 1/2 ( 700 )	
Net Weight lbs (kgs)	88.2 ( 40 ) 88.2 ( 40 ) 88.2 ( 40 ) 99.2 ( 45 )						



**DELTA Comfort Technologies LLC.**  
 3350 SW 148th Ave, Miramar, Florida.33027. USA  
 Tel: 954 734 2708 Fax: 954 874 1699  
[www.deltacomforttechnologies.com](http://www.deltacomforttechnologies.com)  
[www.delta-dct.com](http://www.delta-dct.com)

**DCT Interamerica:** Latin America-Mexico  
[info@dctinteramerica.com](mailto:info@dctinteramerica.com)

**DCT America:** North America, Canada  
[info@dctamerica.com](mailto:info@dctamerica.com)

**DCT Europe:** Europe, M.East, Africa  
[info@dcteu.com](mailto:info@dcteu.com)

**DCT China:** Asia, Pacific, Russia  
[info@dctchina.com](mailto:info@dctchina.com)