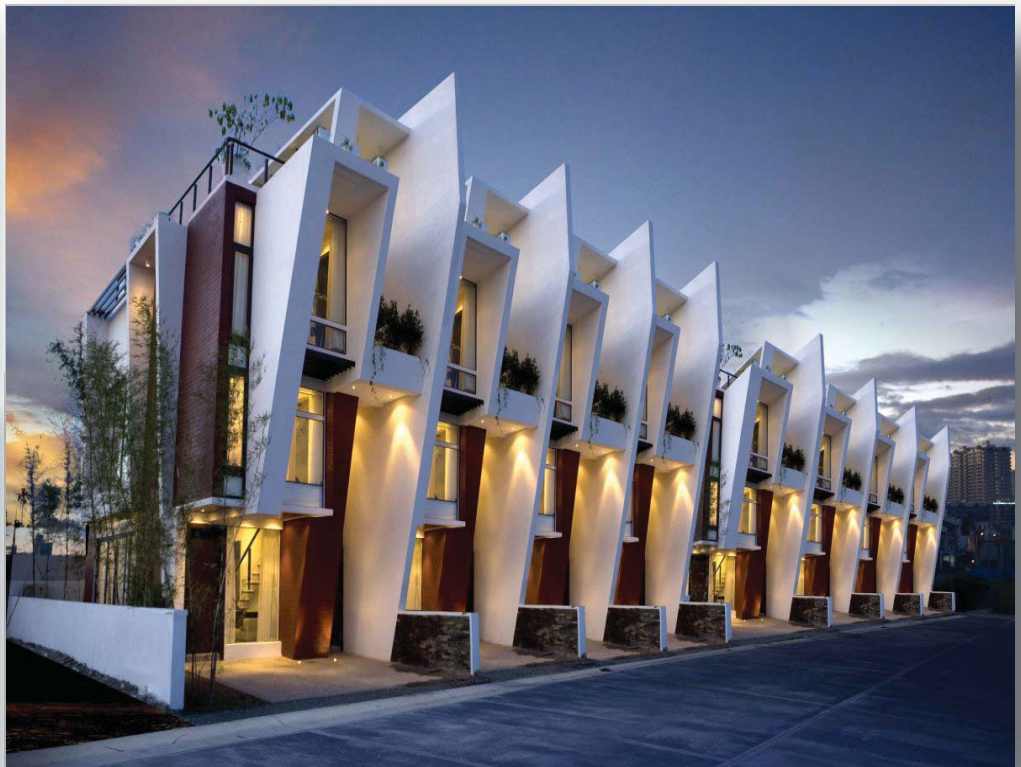




85PF Series
Inspire Ultra **Fan Coil M16**
85CM/85CS Series
Inspire Ultra **Cassette M16**
Inverter Indoor Units



SPECIFICATIONS | 60Hz

85PF Series

Inspire Ultra Fan Coil M16 Inverter Indoor Unit

Cooling : 5,118-30,000 Btuh (1.5-8.8 kW)

Heating : 5,460-34,000 Btuh (1.6-9.9 kW)

ETL & AHRI

INDOOR UNITS FEATURES

- ✓ WIRELESS LCD Remote Control
- ✓ Auto setting for Cooling, Dehumidifying, Fan
- ✓ Auto Restart
- ✓ Sleep Mode
- ✓ LED Display
- ✓ Easy Connect Flare Connections
- ✓ Cleanable Cartridge Filters

PHYSICAL DATA						
MODEL NO.	85PF	009 J 24-026DCGXZ	012 J 24-035DCGXZ	018 J 24-053DCGXZ	021 J 24-062DCGXZ	024 J 24-070DCGXZ
Cooling Capacity	Min - Btuh (kw)	5118 (1.5)	6824 (2.0)	7000 (2.1)	7165 (2.1)	7200 (2.1)
	Max - Btuh (kw)	11940 (3.5)	15000 (4.4)	21000 (6.2)	27300 (8.0)	30000 (8.8)
	Min - Btuh (kw)	5460 (1.6)	6150 (1.8)	7100 (2.1)	7165 (2.1)	7200 (2.5)
Heating Capacity	Max - Btuh (kw)	15360 (5.5)	16400 (4.8)	33000 (9.7)	33500 (9.8)	34000 (9.9)
	Efficiency	SEER Btuh/w (w/w)	16 (4.7)			
Refrigerant Control	Electronic Expansion Valve @ Outdoor Unit					
Fan	Type	Centrifugal				
	Speed	4	4	4	4	4
	Air Flow CFM (m³/hr) - Hi	265 (450)	294 (500)	412 (700)	586 (1000)	586 (1000)
	Noise Level (dbA) Hi	37	39	41	42	42
	Motor (Watts)	80	80	100	124	124
Coil Type:	Grooved Copper Tubes - Aluminum Hydrophilic Fin					
Air Filter	Cleanable Cartridge Type					
Electrical	Voltage	208-230/1/60				
	Range	min 187 - max 253				
	FLA	0.28	0.31	0.41	0.50	0.50
Controls	LCD Wireless Remote Control					
Refrigerant Connections inches (mm)	Type	Flare				
	Liquid	1/4 (6.35)	1/4 (6.35)	1/4 (6.35)	3/8 (9.52)	3/8 (9.52)
	Suction	3/8 (9.52)	3/8 (9.52)	1/2 (12.7)	5/8 (15.9)	5/8 (15.9)
Drain Connections inches (mm)	Height	1 (25)				
	Width	7 7/8 (200)	7 7/8 (200)	7 7/8 (200)	7 7/8 (200)	7 7/8 (200)
Dimensions inches (mm)	Width	27 1/2 (700)	27 1/2 (700)	35 1/2 (900)	43 1/3 (1100)	43 1/3 (1100)
	Depth	24 1/4 (615)	24 1/4 (615)	24 1/4 (615)	24 1/4 (615)	24 1/4 (615)
	Net Weight lbs (kgs)	48.5 (22)	50.7 (23)	59.5 (27)	68.3 (31)	68.3 (31)

85CM/85CS Series

Inspire Ultra Cassette M16 Inverter Indoor Unit

Cooling : 6,824-30,000 Btuh (2.0-8.8 kW)

Heating : 6,150-34,000 Btuh (1.8-9.9 kW)

ETL & AHRI

Notes:

- Nominal capacities are based on ARI standards 210 / 240 - 89, air entering the indoor coil for cooling at 80/67 ° F (27/19 ° C) , DB/WB indoor & 95 ° F (35 ° C) ambient temperature.operating at high fan speed for 220-240 volt, 50/60 Hz operation.
- Ratings are based on indoor and outdoor units connected by 25 ft (7.6 m) of tubing.
- Refrigerant metering device is installed in the indoor unit as standard.
- Sweat service valves are provided for refrigerant pipe connection.
- Insulation of suction line only is required.
- Outdoor units are shipped with full operating charge.
- For details of model number nomenclature, please refer to publication DCTNOM-50314

MODEL NO.	85C	M012J 24-035DWGXZ	M018J 24-053DWGXZ	S024J 24-070DWGXZ
Cooling Capacity Btuh (kw)	Min - Btuh (kw)	6824 (2.0)	7000 (2.1)	7200 (2.1)
	Max - Btuh (kw)	15000 (4.4)	21000 (6.2)	30000 (8.8)
Heating Capacity Btuh (kw)	Min - Btuh (kw)	6150 (1.8)	7100 (2.1)	7200 (2.5)
	Max - Btuh (kw)	16400 (4.8)	33000 (9.7)	34000 (9.9)
Efficiency	SEER Btuh/w (w/w)	16 (4.7)		
Refrigerant Control	Electronic Expansion Valve @ Outdoor Unit			
Fan	Type	Centrifugal		
	Speed	4	4	4
	Air Flow CFM (m³/hr) - Hi	353 (600)	353 (600)	694 (1180)
	Noise Level (dbA) Hi	46	46	39
	Motor (Watts)	50	50	100
Coil Type:	Grooved Copper Tubes - Aluminum Hydrophilic Fin			
Air Filter	Cleanable Cartridge Type			
Electrical	Voltage	208-230/1/60		
	Range	min 187 - max 253		
	FLA	0.18	0.18	0.43
Controls	LCD Wireless Remote Control			
Refrigerant Connections Inches (mm)	Type	Flare		
	Liquid	1/4 (7)	1/4 (7)	3/8 (10)
	Suction	3/8 (10)	1/2 (12)	5/8 (16)
Drain Connections inches (mm)	Height	1 1/4 (31)		
Ceiling panel Dimensions inches (mm)	Height	2 (50)	2 (50)	2 3/8 (60)
	Width	25 1/2 (650)	25 1/2 (650)	37 1/2 (950)
	Depth	25 1/2 (650)	25 1/2 (650)	37 1/2 (950)
Ceiling panel Weight lbs (kgs)	6.6 (3)	6.6 (3)	15.4 (7)	
Body Dimensions inches (mm)	Height	9 (230)	9 (230)	9 3/8 (240)
	Width	22 3/8 (570)	22 3/8 (570)	33 1/8 (840)
	Depth	22 3/8 (570)	22 3/8 (570)	33 1/8 (840)
Body Net Weight lbs (kgs)	39.6 (18)	39.6 (18)	61.6 (28)	



DELTA Comfort Technologies LLC.
3350 SW 148th Ave, Miramar, Florida.33027. USA
Tel: 954 734 2708 Fax: 954 874 1699
www.deltacomforttechnologies.com
www.delta-dct.com

DCT Interamerica: Latin America-Mexico
info@dctinteramerica.com

DCT America: North America, Canada
info@dctamerica.com

DCT Europe: Europe, M.East, Africa
info@dcteu.com

DCT China: Asia, Pacific, Russia
info@dctchina.com